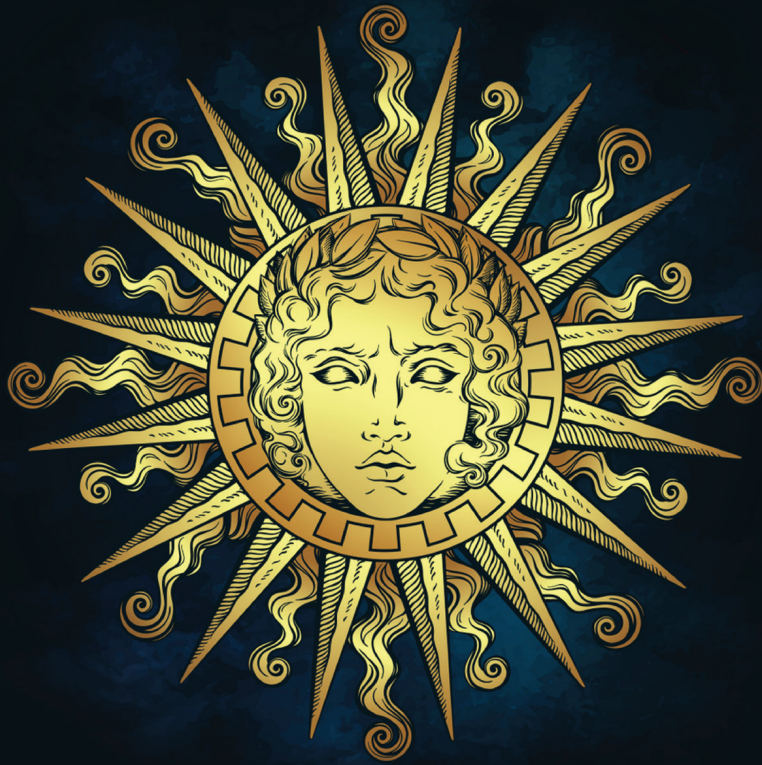




**SORAKE BUILDERS®**

*Expect the Exceptional*



SORAKE

**HELIOS**

Maroli, Mangaluru

[www.sorakebuilders.com](http://www.sorakebuilders.com)



  
SORAKE  
HELIOS

SORAKE  
**HELIOS**

Maroli, Mangaluru

Situated in Maroli, one of the most verdant locales of Mangaluru city, Sorake Helios is an elegant ground plus 5 storey structure sporting 20 spacious apartments. Sorake Helios is well supported with all essential facilities and has the benefit of being located by the National Highway 73 with easy access to Padil junction and civic amenities such as educational institutions, shopping, medical facilities, religious shrines, Mangaluru airport and Kankanady railway station.



## Highlights

- ▶ 20 meticulously designed units in five floors
- ▶ Granite Flooring for common area and staircase
- ▶ 8 passengers automatic elevator
- ▶ Reticulated gas connection
- ▶ Generator backup with acoustic enclosure
- ▶ 24x7 water supply with borewell in addition to city corporation water connection
- ▶ Fire fighting system
- ▶ Superior quality vitrified floor tiles inside the apartment
- ▶ Attractive decorative main entrance door
- ▶ Premium quality CP fittings for toilets and kitchen
- ▶ Double coat exterior plastering
- ▶ Putty finished acrylic emulsion painting for ceiling and walls
- ▶ External painting of the building with acrylic external emulsion
- ▶ Modular electrical switches
- ▶ Concealed electrical wiring of a reputed brand
- ▶ Electrical fittings for common area, car parking and yard
- ▶ RCC door frames with good quality painted flush door shutters for rooms
- ▶ Fibrotech shutters for toilets
- ▶ Superior designer lock for all doors
- ▶ Brushed stainless steel finished door hardware
- ▶ Powder Coated aluminium window frames with grill
- ▶ Overhead water tank and underground sump tank with required pumps
- ▶ Covered car parking
- ▶ Interlock paving for car parking and Yard
- ▶ Elegant compound wall and gate





## SPECIFICATIONS

### DRAWING/DINING

- ▶ Telephone point
- ▶ TV point
- ▶ Call bell
- ▶ Wash basin for dining

### BEDROOMS

- ▶ Split AC provision for all bedrooms
- ▶ TV point & telephone point in master bedroom

### KITCHEN & WORK AREA

- ▶ Polished granite platform with bull nosing
- ▶ 2'0" glazed tile dado above platform
- ▶ Stainless steel sink with drain board
- ▶ Reticulated gas connection
- ▶ Adequate power points
- ▶ Provision for exhaust fan
- ▶ Provision for washing machine in work area

### BATHROOMS

- ▶ Waterproof treatment done for sunken RCC slab
- ▶ Coloured antiskid ceramic tiles for toilet floor & glazed tile dado up to full height
- ▶ Pressure checked plumbing & drainage lines
- ▶ Single Lever Diverter in all bathrooms
- ▶ Wash basin in all toilets
- ▶ Wall mount commodes in all toilets
- ▶ Flush valves for commodes
- ▶ Health faucet in all toilets
- ▶ Geyser point in all bathrooms
- ▶ Aluminium ventilators with exhaust fan provision

# GROUND FLOOR PLAN



Shop - 2140 Sft.



# TYPICAL FLOOR PLAN

(1st - 5th)



FLAT	TYPE	AREA
01	2 BHK	1160 sft
02	3 BHK	1535 sft
03	2 BHK	1080 sft
04	2 BHK	1085 sft





**SORAKE BUILDERS®**

*Expect the Exceptional*

COMPLETED PROJECTS



Sorake Elegance  
Urwa, Mangaluru



Sorake Fedora  
Hathill, Mangaluru



Sorake Greycliff  
Padavinangady, Mangalore

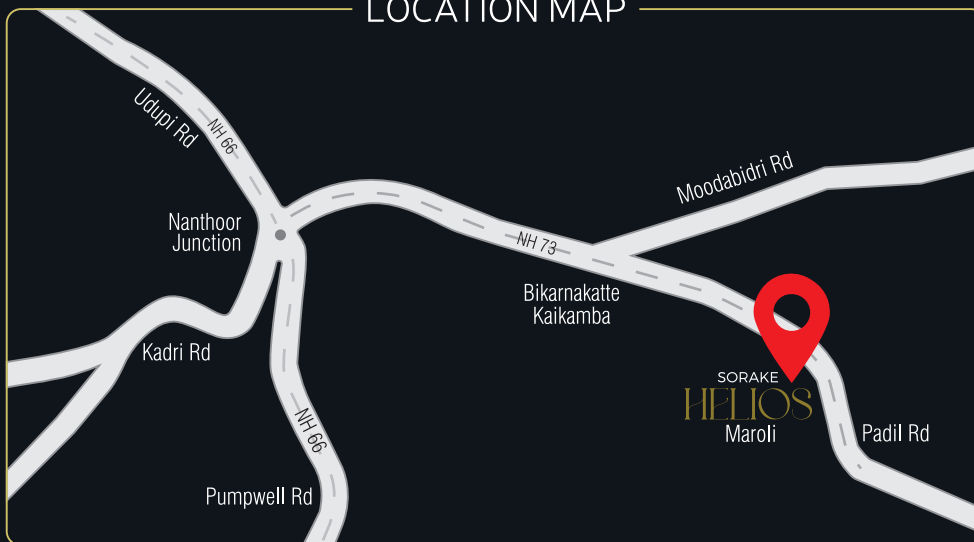


Sorake Iris  
Bejai, Mangalore



Nanda Deep  
Near Urwa Marigudi Temple, Mangalore

## LOCATION MAP



SCAN ME



# SORAKE BUILDERS®

*Expect the Exceptional*

Bikarnakatta Main Road, Mangaluru - 575 005, Karnataka, India.

Email: [contact@sorakebuilders.com](mailto:contact@sorakebuilders.com) | Website: [www.sorakebuilders.com](http://www.sorakebuilders.com)

**For Booking:** Tel: 0824 2213496 Mobile: 81058 43496, 81050 03496

### ARCHITECT

Ar. Suresh Pai  
Nayak Pai & Associates  
Lalbagh, Mangaluru

### STRUCTURAL CONSULTANT

Anand Bhat  
Design Associates  
Hathill, Mangaluru

### CIVIL CONTRACTOR

Chandan Constructions  
Gandhi Nagar, Mangaluru